



INDOFINE Chemical Company, Inc.

121 Stryker Lane, Bldg. 30, Suite 1 • Hillsborough, NJ 08844 • U.S.A.

Phone: (908) 359-6778 • FAX: (908) 359-1179

website: www.indofinechemical.com

e-mail: chemical@indofinechemical.com

CERTIFICATE OF ANALYSIS

Catalog Number: 021104S

Product name: **CHRYSOERIOL WITH HPLC**
(4',5,7-Trihydroxy-3'-methoxyflavone)

CAS Number: [491-71-4]

Lot Number: 2201636

Chemical Formula: C₁₆H₁₂O₆

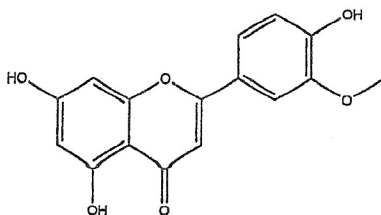
Molecular Weight: 300.27

Appearance: Green powder

Loss on Drying: 1.7%

Storage: Store in a cool, dry place

Purity(HPLC): 99.1%



Prepared by:
Ramesh Mandadi
Ramesh Mandadi
Director of Operations

Reviewed and Approved by:
Sujata Moton
Sujata Moton
VP



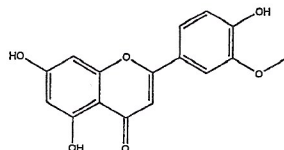
INDOFINE Chemical Company, Inc.

121 Stryker Lane, Bldg. 30, Suite 1 • Hillsborough, NJ 08844 • U.S.A.

Phone: (908) 359-6778 • FAX: (908) 359-1179

website: www.indofinechemical.com

e-mail: chemical@indofinechemical.com



HPLC ANALYSIS

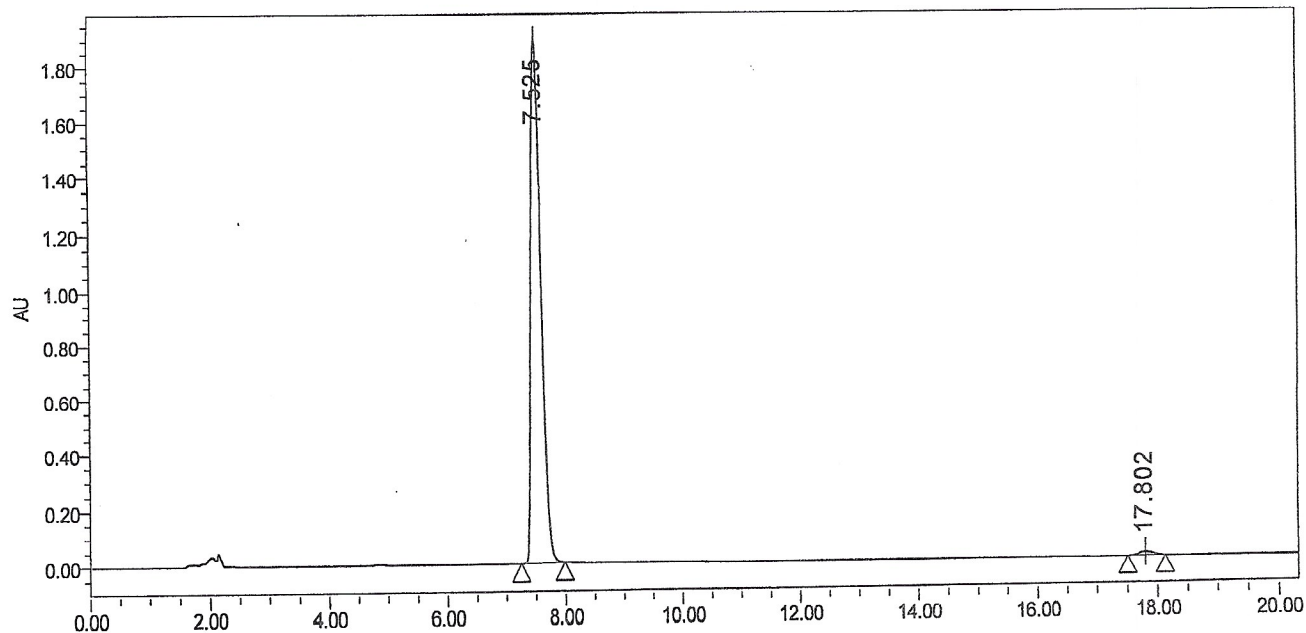
Catalog No.: 021104S
Product Name: Chrysoeriol
Lot No.: 2201636

SAMPLE INFORMATION

Sample Name: Chrysoeriol
Sample Type:
Vial: 71
Injection #: 1
Injection Volume: 10.00 ul
Run Time: 25.0 Minutes

Acquired By:
Sample Set Name
Acq. Method Set: Chrysoeriol
Processing Method sample

Auto-Scaled Chromatogram



peak Results

	RT	Area	% Area	Height	USP Plates	USP Resolution
1	7.525	22385064	99.07	1894212	9321.33	
2	17.802	210509	0.93	12481	22376.01	26.21

Prepared by:
Ramesh Mandadi
Ramesh Mandadi
Director of Operations

Reviewed and Approved by:
Sujata Moton
Sujata Moton
VP